

BORN FOR THE SUN

SOLARBORN
BORN FOR THE SUN

Solarborn Technologies Co.,Ltd

Add : 9-4, West Building, Kemao High-Tech Center, No. 100 Xiangyun Road,
Gaoxin District, Ningbo City, Zhejiang Province, China.

Add : No.229 East Siming Road, Fenghua District, Ningbo City, Zhejiang Province

Tel : +86-574 87626801

Email : Sales@solarborn.com



About Us

About Solarborn

Solarborn Technologies Co., Ltd. was established in 2012 as a professional manufacturer specializing in solar panels and solar mounting brackets.

Solarborn is committed to providing quality products and professional solutions and service for clean energy applications globally, and aims to create a green energy world together with partners from all over the world.

With a team over 17 years of experience in research, development, and manufacturing in the solar industry, Solarborn offers a comprehensive range of products and solutions. Our solar panels are equipped with the latest technologies and certificated with the CE/TUV IEC61215 & 61730, delivering power outputs ranging from 20W to 700W. Our solar mounting brackets mainly use aluminum and steel, and are accompanied by professional design solutions to ensure optimal installation and performance.

Learn more on www.solarborn.com

Advantage

With 5 service centers located in Germany, Spain, Brazil, Djibouti and Pakistan, Solarborn provides local support and assistance to customers around the world. Our global presence allows us to be close to our customers and respond quickly to their needs.

With 7 years of experience in solar project design, installation, and operation and maintenance, Solarborn has the expertise and capabilities to serve as the EPC partner for any project. We take pride in our ability to deliver reliable and efficient solar solutions that are tailored to the specific needs of each client.

As a trusted partner in the solar industry, Solarborn Technologies Co., Ltd. strives to promote the use of clean energy and contribute to a sustainable future.

5 offices

5 offices in Germany, Spain, Brazil, Djibouti, and Pakistan.

17 years

A team with 17 years of experience in the solar industry for R&D and production.

7 years

7 years of experience in solar project design, installation, and O&M.

Born For The Sun

Vision:

Build a global photovoltaic ecosystem.

Mission:

Let clean energy light up everywhere.

Values:

Integrity, Focus, Dedication, Pragmatism, Efficiency.

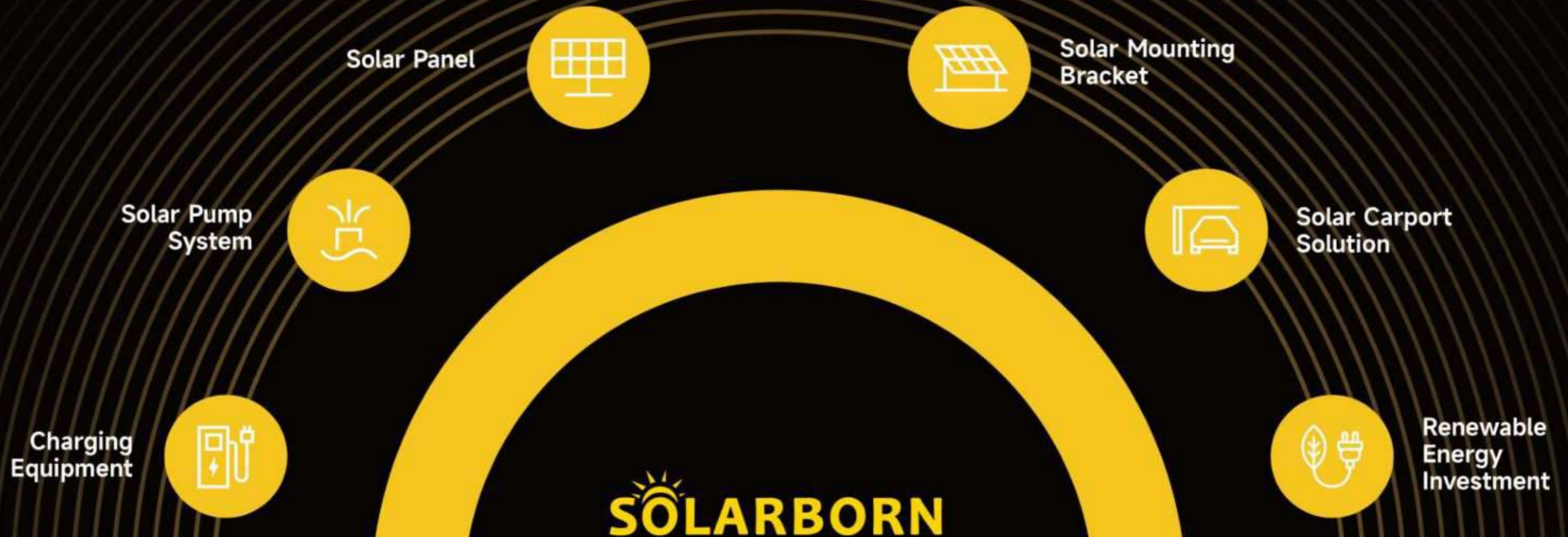
Commitment:

Environmental Protection, Renewable Energy Use, Energy Saving and Emission Reduction.

Global



「 SOLAR + SYSTEM + APPLICATION 」



Certificate

SÖLARBORN



Our Factory



PROFESSIONALISM, THE BASIS OF TRUST!

We design and manufacture high quality solar panel and solar mounting brackets, used for different residential roof, commercial roof and ground scenes.

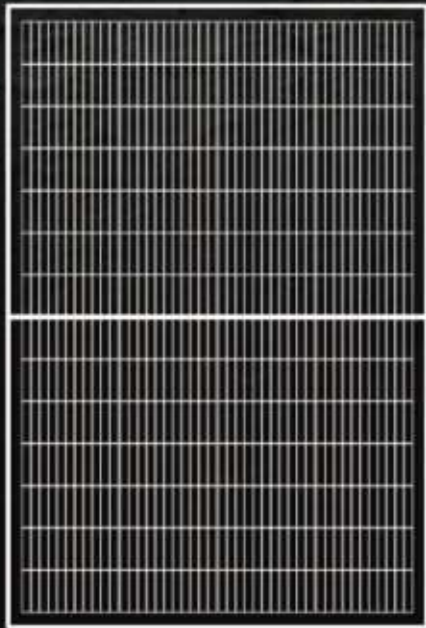


We control all links with high standards for progressive management, real-time monitoring, and superior-performance products.

Mercury

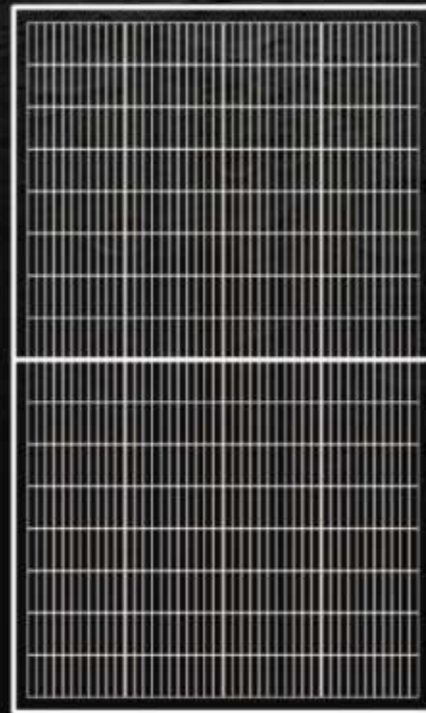
Series PV Panel

Explore Mercury Together!



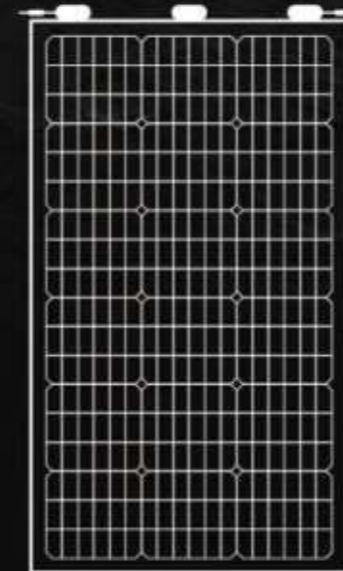
Mercury Mariner

Mariner, looking into the distance,
riding the wind and waves



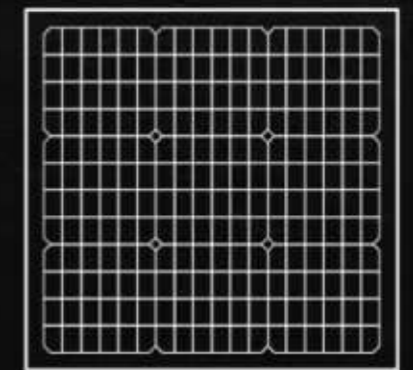
Mercury Messenger

Messenger, rain or shine, always
hardworking for you



Mercury Flexime

Flexime, Like a cloud, change yourself



Mercury Shaper







Explore the unknown, achieve the ideal

Mercury Mariner

560~580W

SLB144DNT9



-  Stability
-  Adaptability
-  Quality
-  Reliability
-  Renewability
-  Ability

-  15 Year Product Warranty
-  30 Year Power Warranty

Electrical Characteristics(STC*)

Power Output(Wp)	560	565	570	575	580
Max Power Tolerance(W)	0~+5	0~+5	0~+5	0~+5	0~+5
Module Efficiency(%)	21.68	21.87	22.07	22.26	22.45
Voltage Mpp-Vmpp(V)	42.17	42.35	42.51	42.69	42.87
Current Mpp-Impp(A)	13.28	13.34	13.41	13.47	13.53
Voltage Open Circuit-Voc(V)	50.63	50.83	51.03	51.23	51.43
Short Circuit Current-Isc(A)	14.06	14.12	14.18	14.24	14.30

* STC: Irradiance 1000W/m², Environment Temperature 25°C, Air Mass AM1.5

Electrical Characteristics(NMOT*)

Power Output(Wp)	423	427	431	435	439
Voltage Mpp-Vmpp(V)	39.64	39.79	39.98	40.13	40.28
Current Mpp-Impp(A)	10.67	10.73	10.78	10.84	10.90
Voltage Open Circuit-Voc(V)	48.26	48.45	48.64	48.83	49.02
Short Circuit Current-Isc(A)	11.35	11.40	11.45	11.49	11.54

* NMOT: Irradiance 800W/m², Environment Temperature 20°C, Air Mass AM1.5

With Different Power Generation Gain (regarding 570W as an example)

Power Gain (%)	10	15	20	25	30
Power Output (Wp)	616	650	684	719	754
Voltage Mpp-Vmpp (V)	42.51	42.51	42.51	42.51	42.51
Current Mpp-Impp (A)	14.49	15.28	16.09	16.91	17.74
Voltage Open Circuit-Voc (V)	51.03	51.03	51.03	51.03	51.03
Short Circuit Current-Isc (A)	15.60	16.31	17.02	17.73	18.43

Mechanical Data

Dimension Of Module	2279*1134*30mm
Weight	32.5kg
Front /Rear Glass	2.0mm, Anti-Reflection Coating, Heat Strengthened Glass
Cables	4mm ² /300mm or Customized Length
Junction Box	IP68,3 Bypass-Diode
Connector	MC4 compatible
Max System Voltage	1500VDC
Max Series Fuse Rating	30A
Maximum Load Capacity	Snow 5400Pa/Wind 2400Pa
Operating Temperature	-40~+85
Safety Class	II



Temperature Ratings

Temperature Coefficients of Isc(%/C)	0.046
Temperature Coefficients of Voc(%/C)	-0.260
Temperature Coefficients of Pmpp(%/C)	-0.310
NMOT	42±2°C

Packaging Configuration

Package	36pcs/pallet
Container	40' FT
Pieces Per Container	720

SLB120DNT9

1909 * 1134 * 30 mm



Power Output
460~480W

SLB108DNT9

1722 * 1134 * 30 mm



Power Output
415~435W

SLB144M9

2279 * 1134 * 35 mm



Power Output
530~550W

SLB120M9

1915 * 1134 * 35 mm



Power Output
435~455W

SLB108M9

1722 * 1134 * 35 mm



Power Output
390~410W

SLB126MM8

1805 * 1035 * 30 mm

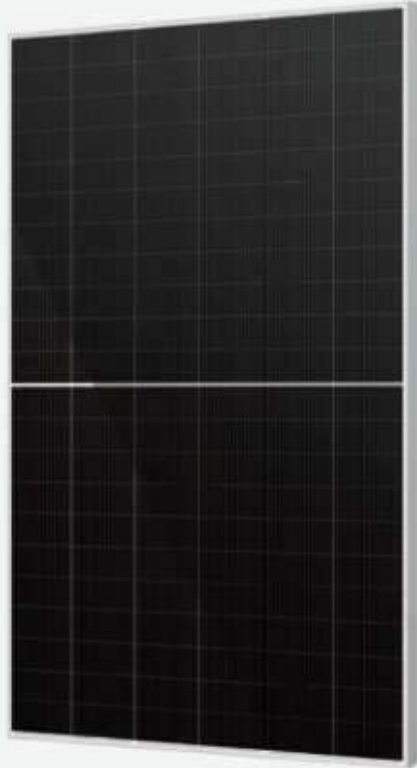


Power Output
370~380W

Mercury Messenger

680~700W

SLB132NT10



Stability



Adaptability



Quality



Reliability



Renewability



Ability



Product Warranty



Power Warranty

Electrical Characteristics(STC*)

Power Output(Wp)	680	685	690	695	700
Max Power Tolerance(W)	0~+5	0~+5	0~+5	0~+5	0~+5
Module Efficiency(%)	21.89	22.05	22.21	22.37	22.53
Voltage Mpp-Vmpp(V)	38.55	38.74	38.94	38.13	39.33
Current Mpp-Impp(A)	17.64	17.68	17.72	17.76	17.80
Voltage Open Circuit-Voc(V)	46.50	46.69	46.88	47.07	47.26
Short Circuit Current-Isc(A)	18.69	18.74	18.79	18.84	18.89

* STC: Irradiance 1000W/m², Environment Temperature 25°C, Air Mass AM1.5

Electrical Characteristics(NMOT*)

Power Output(Wp)	513	517	521	525	529
Voltage Mpp-Vmpp(V)	36.15	36.36	36.56	36.74	36.94
Current Mpp-Impp(A)	14.19	14.22	14.25	14.29	14.32
Voltage Open Circuit-Voc(V)	44.37	44.56	44.75	44.94	45.13
Short Circuit Current-Isc(A)	15.05	15.09	15.13	15.17	15.21

* NMOT: Irradiance 800W/m², Environment Temperature 20°C, Air Mass AM1.5

Mechanical Data

Dimension Of Module	2384*1303*35mm
Weight	33kg
Glass	High transmission glass 3.2mm
Cables	4mm ² /300mm or Customized Length
Junction Box	IP68,3 Bypass-Diode
Connector	MC4 compatible
Max System Voltage	1500VDC
Max Series Fuse Rating	30A
Maximum Load Capacity	Snow 5400Pa/Wind 2400Pa
Operating Temperature	-40~+85
Safety Class	II



Temperature Ratings

Temperature Coefficients of Isc(%/C)	0.046	Package	31pcs/pallet
Temperature Coefficients of Voc(%/C)	-0.266	Container	40'FT
Temperature Coefficients of Pmpp(%/C)	-0.310	Pieces Per Container	558
NMOT	42±2°C		

Packaging Configuration

SLB120NT10

2172 * 1303 * 35 mm



Power Output
615~635W

SLB132M10

2384 * 1303 * 35 mm



Power Output
645~665W

SLB90M10

1962 * 1096 * 35 mm



Power Output
435~450W

SLB80M10

1754 * 1096 * 30 mm



Power Output
385~400W

SLB108M10

1980 * 1303 * 35 mm



Power Output
525~545W

SLB120M10

2172 * 1303 * 35 mm



Power Output
585~605W

Mercury Flexime

360~380W

SLB126MF8



Flexibility



Technicality



Ingenuity



Quality



Locality



Renewability



Product
Warranty



Power
Warranty

Electrical Characteristics(STC*)

Power Output(Wp)	360	365	370	375	380
Max Power Tolerance(W)	0~+5	0~+5	0~+5	0~+5	0~+5
Module Efficiency(%)	20.40	20.70	21.00	21.20	21.50
Voltage Mpp-Vmpp(V)	34.70	34.90	35.10	35.30	35.50
Current Mpp-Impp(A)	10.37	10.46	10.54	10.62	10.70
Voltage Open Circuit-Voc(V)	42.20	42.40	42.60	42.80	43.00
Short Circuit Current-Isc(A)	11.02	11.09	11.16	11.23	11.30

* STC: Irradiance 1000W/m², Environment Temperature 25°C, Air Mass AM1.5

Electrical Characteristics(NMOT*)

Power Output(Wp)	270	274	278	282	286
Voltage Mpp-Vmpp(V)	32.60	32.80	33.00	33.20	33.40
Current Mpp-Impp(A)	8.28	8.35	8.42	8.49	8.56
Voltage Open Circuit-Voc(V)	39.70	39.90	40.10	40.30	40.50
Short Circuit Current-Isc(A)	8.84	8.91	8.98	9.05	9.12

* NMOT: Irradiance 800W/m², Environment Temperature 20°C, Air Mass AM1.5

Mechanical Data

Cell	126cell (21x6) Mono J(half cell)
Installation Module Dimension	1810x1040x2.5mm
Weight	5.7kg
Back Material	Back Sheet (white)
Encapsulant	EVA /POE
Frame	None
Junction Box	IP68
Cable	Customizable/4mm ²
Bending radius	0.3m
Max. Series Fuse Rating	18A
Max. System Voltage	DC1500V
Operating Temperature Range	-40~+85

Temperature Ratings

Temperature Coefficients of Isc(%/°C)	0.06
Temperature Coefficients of Voc(%/°C)	-0.28
Temperature Coefficients of Pmpp(%/°C)	-0.36
NMOT	45±2°C

Packaging Configuration

Package	46pcs/carton
Container	40'HQ
Pieces Per Container	1104PCS



SLB36MF8

1065 * 520 * 1.4 mm



Power Output
100W

SLB36MF8

1065 * 520 * 1.4 mm



Power Output
95W

SLB28MF9

710 * 795 * 2.5 mm



Power Output
100W

SLB72MF9

1752 * 815 * 2.5 mm



Power Output
260W

SLB40MF10

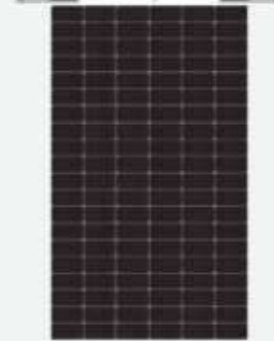
1130 * 900 * 2.5 mm



Power Output
200W

SLB120MF9

1936 * 1135 * 2.5 mm

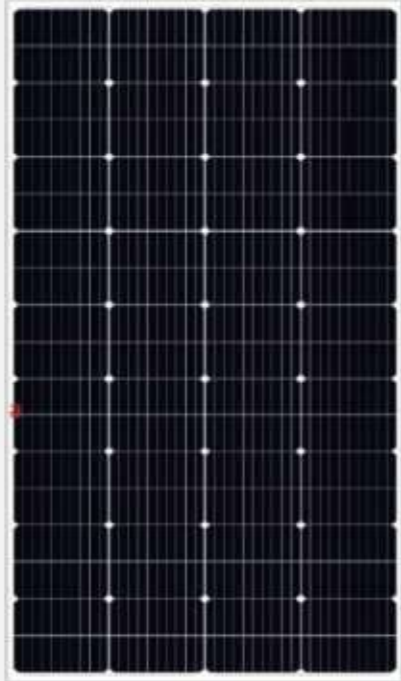


Power Output
430~450W

Mercury Shaper

250W

SLB72M9



Stability



Diversity



Productivity



Quality



Plasticity



Renewability



Product Warranty



Power Warranty

Electrical Characteristics(STC*)

Power Output(Wp)	250
Max Power Tolerance(W)	0~+5
Module Efficiency(%)	18.82
Voltage Mpp-Vmpp(V)	20.43
Current Mpp-Impp(A)	12.24
Voltage Open Circuit-Voc(V)	23.84
Short Circuit Current-Isc(A)	12.94

* STC: irradiance 1000 W/m², AM 1.5, G and cell temperature of 25°C

Electrical Characteristics(NMOT*)

Power Output(Wp)	192.50
Voltage Mpp-Vmpp(V)	18.59
Current Mpp-Impp(A)	10.34
Voltage Open Circuit-Voc(V)	21.64
Short Circuit Current-Isc(A)	10.70

* NMOT: Irradiance 800W/m², Environment Temperature 20°C, Air Mass AM1.5

Mechanical Data

Dimension Of Module	1725*770*30mm
Weight	13.95kg
Glass	3.2mm high transmission, low iron, tempered glass
Junction Box	IP67 /4mm ² cable 900mm
Max System Voltage	1000VDC
Max Series Fuse Rating	10A
Operating Temperature	-40~+85
Safety Class	II

Temperature Ratings

Temperature Coefficients of Isc(%/°C)	+0.0485%
Temperature Coefficients of Voc(%/°C)	-0.330%
Temperature Coefficients of Pmpp(%/°C)	-0.400%
NMOT	45±2°C

Packaging Configuration

Package	2pcs/carton
Container	40'HQ
Pieces Per Container	1094PCS



SLB72M10

1980 * 880 * 35 mm



Power Output
370W

SLB68M10

1870 * 880 * 35 mm



Power Output
330W

SLB60M10

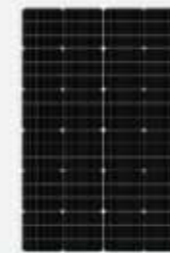
1650 * 880 * 35 mm



Power Output
300W

SLB72M8

1080 * 705 * 30 mm



Power Output
150W

SLB36M8

1075 * 540 * 30 mm



Power Output
100W

SLB36M8

570 * 540 * 25 mm



Power Output
50W

Solar PV Mounting Bracket System



Pitched Roof



Concrete Flat Roof



Carport Brackets



Sun Room



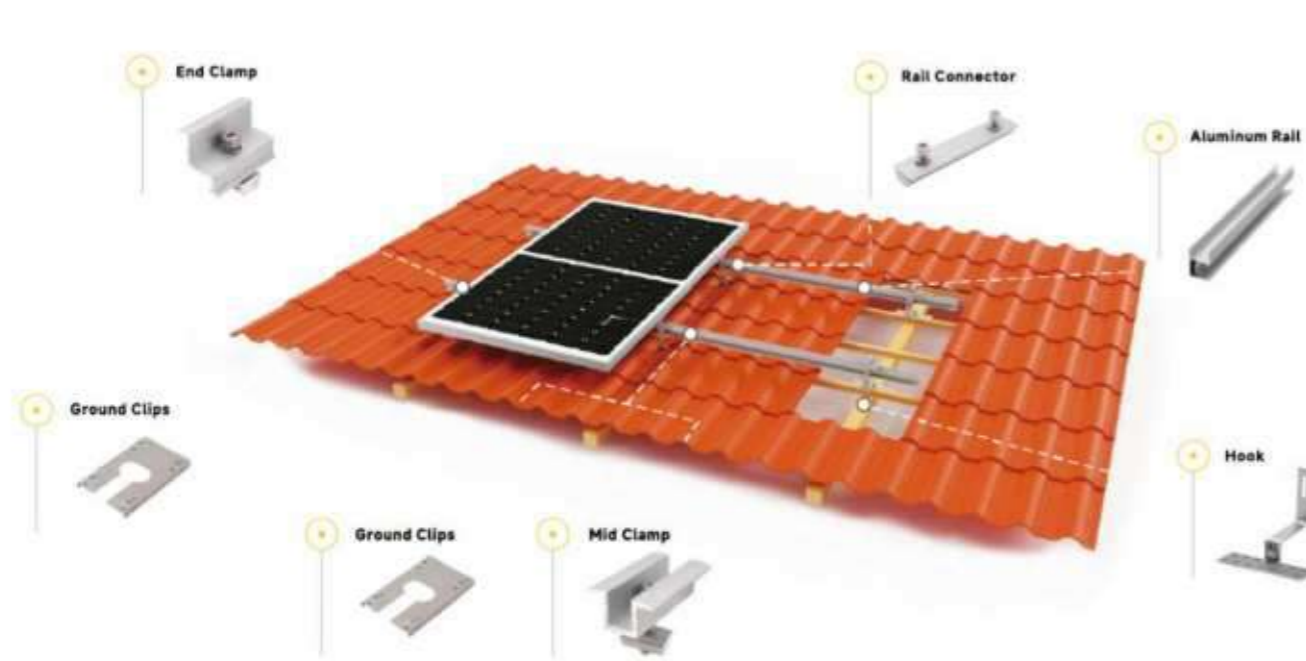
Ground Mounting



Balcony Brackets

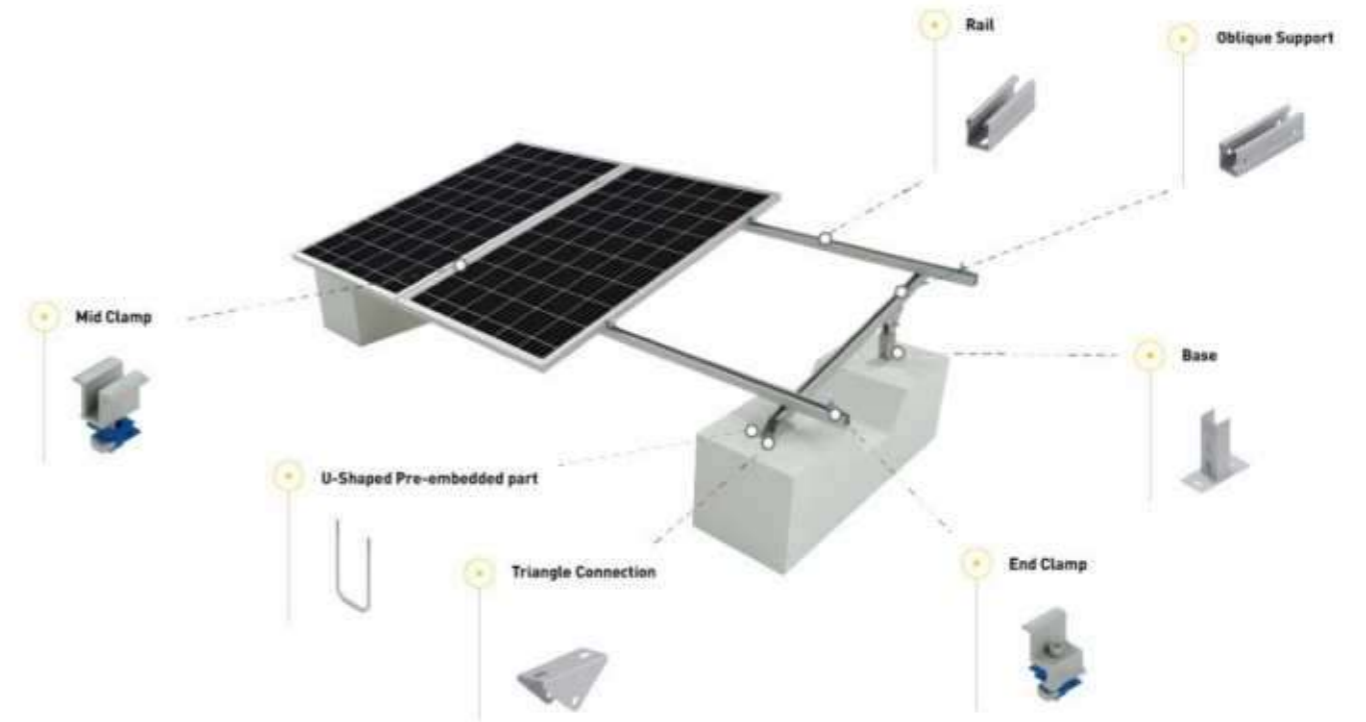
PITCHED TILE ROOF BRACKETS

Customization of Solar Mounting System



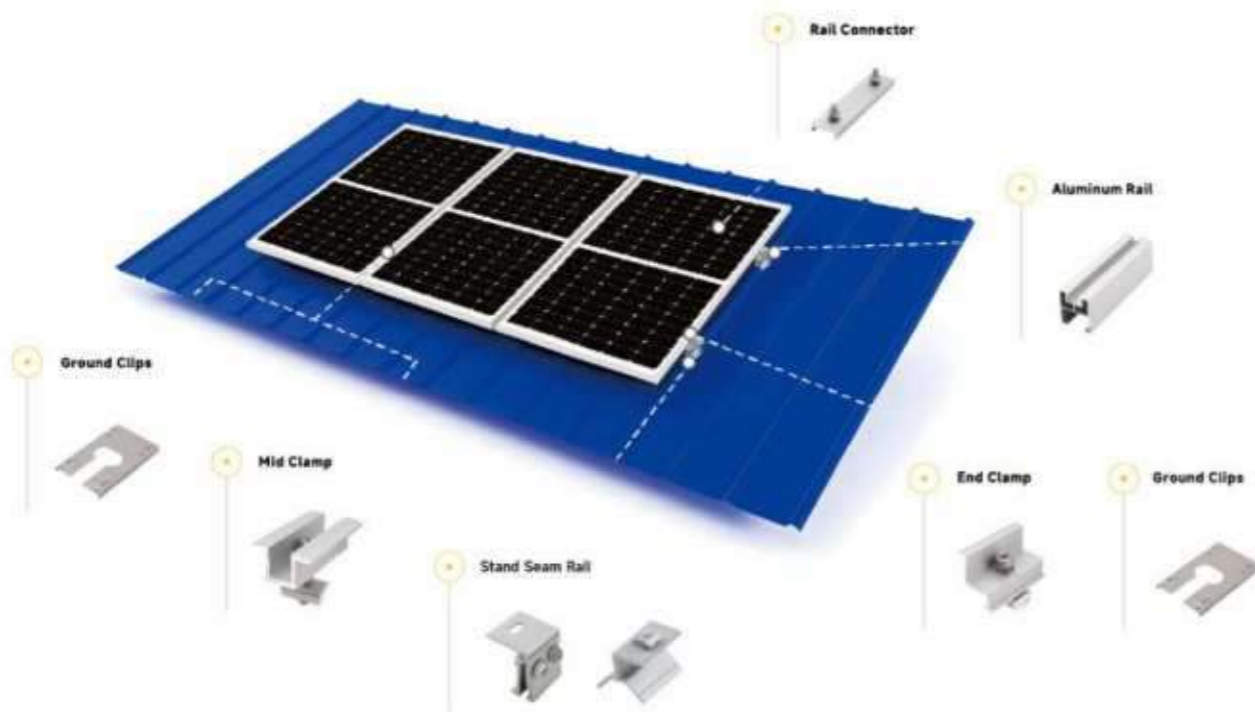
CONCRETE FLAT ROOF BRACKETS

Customization of Solar Mounting System



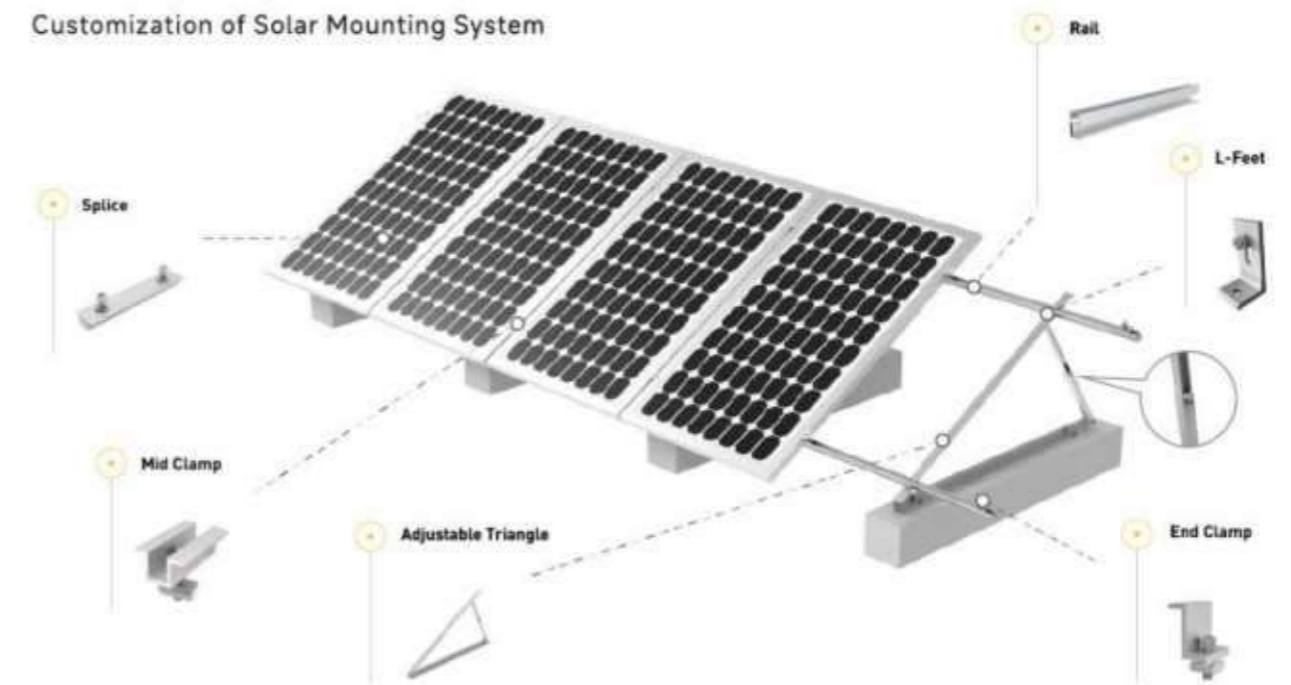
CORRUGATED SHEET METAL BRACKETS

Customization of Solar Mounting System



FLAT ROOF ADJUSTABLE TRIANGLE BRACKETS

Customization of Solar Mounting System



• The final solution will be defined according to the project condition.

ADJUSTABLE BALCONY BRACKETS

Customization of Solar Mounting System



CONCRETE FLAT ROOF BRACKETS

Customization of Solar Mounting System



SOLARBORN

SOLAR CARPORT BRACKETS

Customization of Solar Mounting System



SOLARBORN

If you have customized projects for inquiry,
Please feel free to contact us.

• The final solution will be defined according to the project condition.

Solution



Residential

Creating energy independence and home electricity optimization for a better living.



Industrial and Commercial

Long-term stable and low electricity price for your projects.



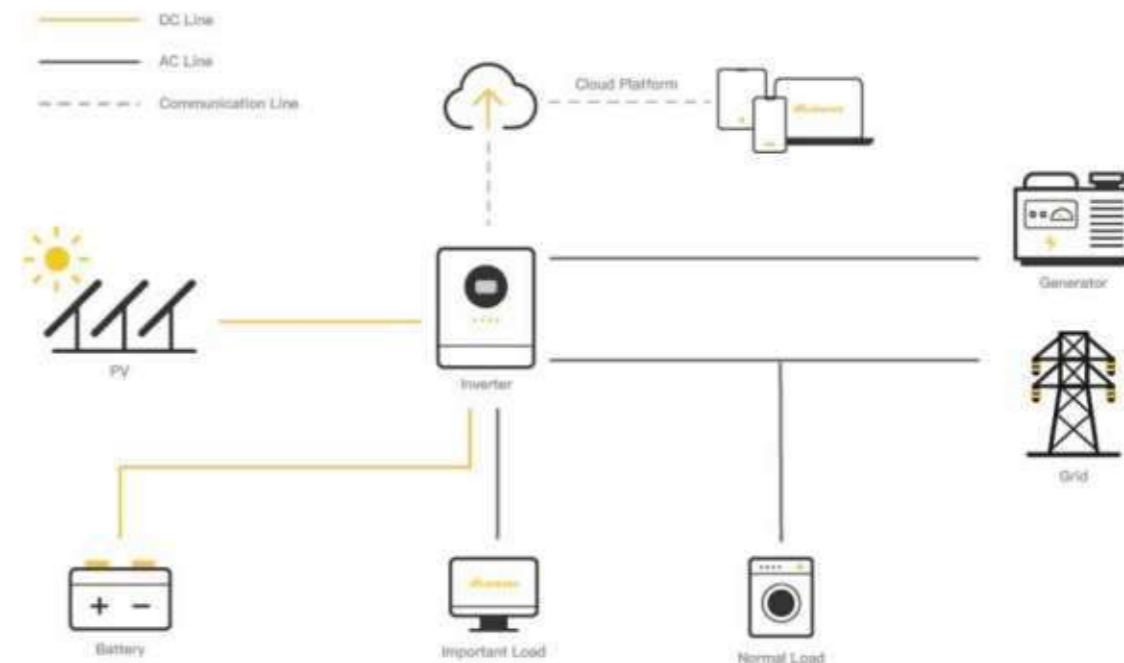
Ground Power Station

Through the combination of software and hardware, highly integrated Energy Storage System products can meet the application of various scenarios.

Residential



Creating energy independence and home electricity optimization for a better living.



• The final solution will be defined according to the project condition.

Advantage

Create energy independence and home power for a better life without fear of power restrictions.



Compatible with lithium-ion batteries and lead-acid batteries



Compatible with high and low voltage batteries

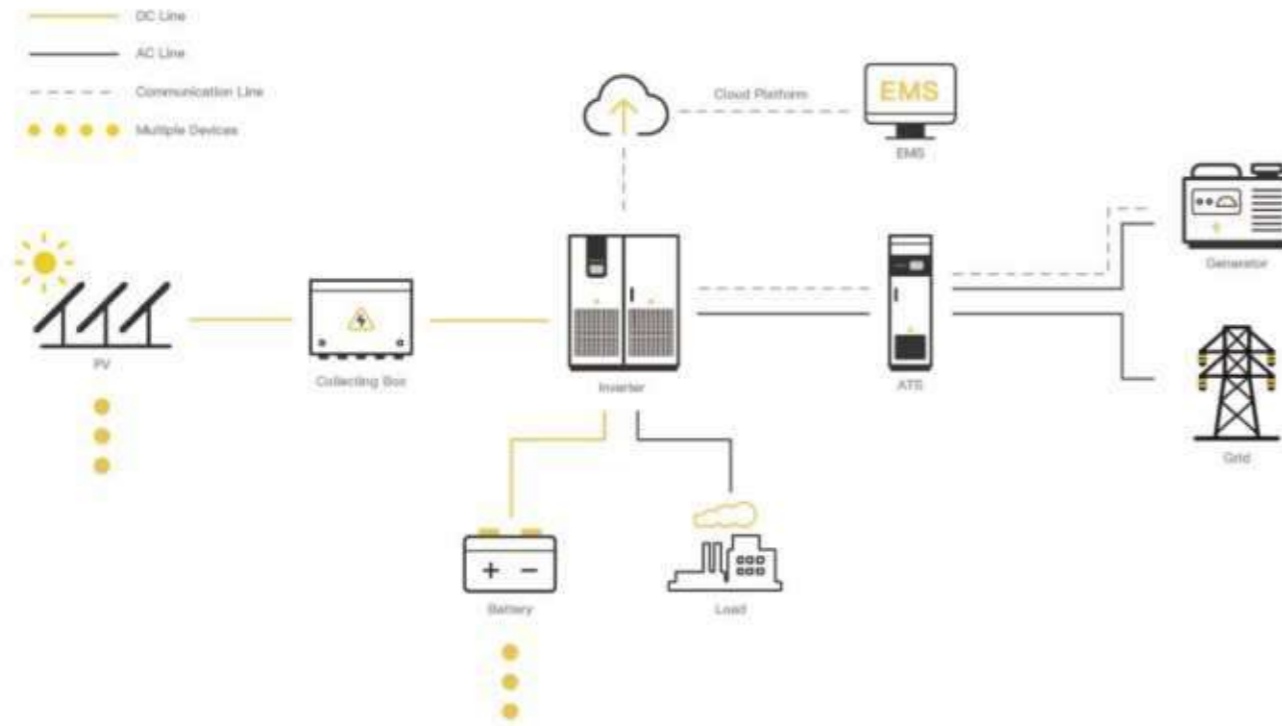


Compatible with house intelligent energy management system



Commercial And Industrial

Long-term stable and low electricity price for your projects.



● The final solution will be defined according to the project condition.

Advantage

Help enterprises easily realize the concept of power saving, environmental protection and low carbon sustainability.



Built in transformer high load tolerance and high reliability



Integrated energy efficiency management



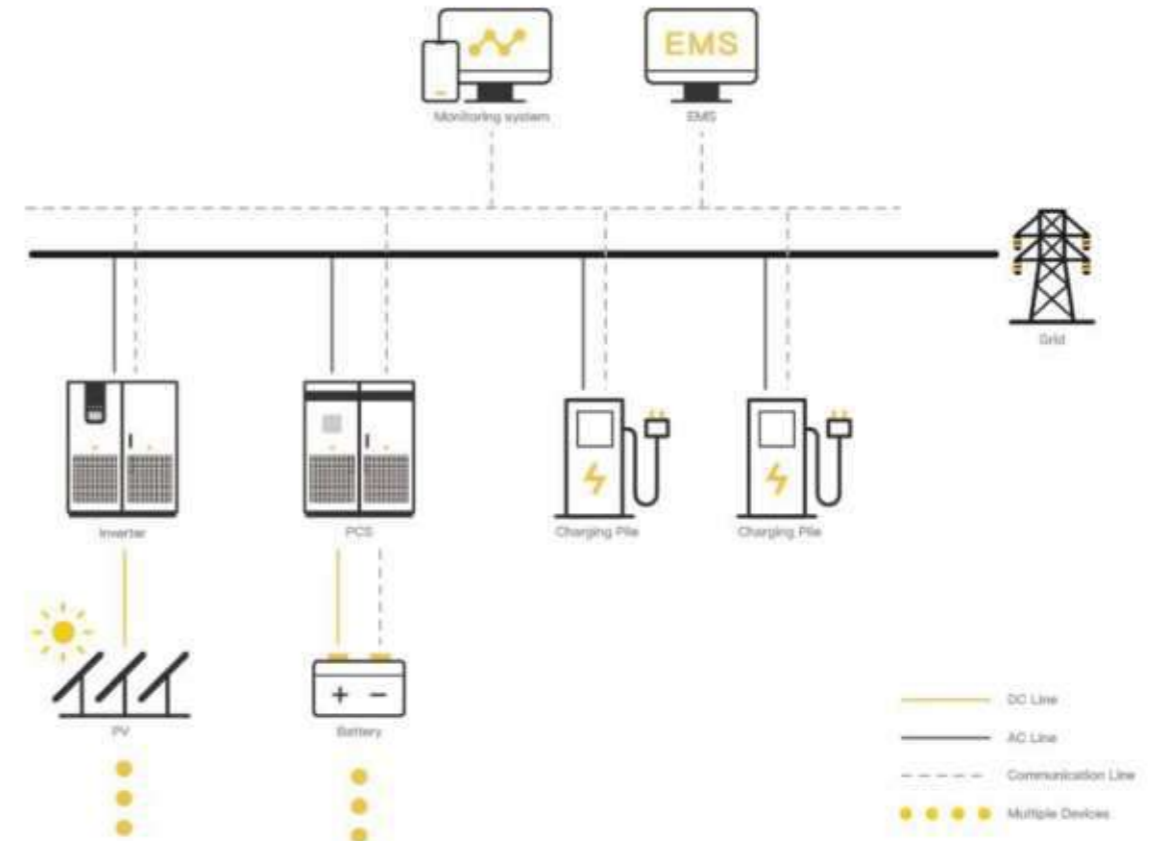
Comprehensive monitoring and complete data visualization



Ground Power Station



Through the combination of software and hardware, highly integrated Energy Storage System products can meet the application of various scenarios.



● The final solution will be defined according to the project condition.

Advantage

It can help the project promote green energy change and successfully achieve the goal of "double carbon".



SOC equalization control to protect the batteries



Master/slave control functional machines work in V/F mode



Current balance control current unbalance -5%







A Brighter and More
Sustainable Future

SOLARBORN

Green, Low carbon, Environmentally Friendly, Sustainable



We will continue to focus on environmental protection, renewable energy, energy saving and emission reduction in our business and supply chain to ensure sustainable development of our company and advocate for a "green circular economy".